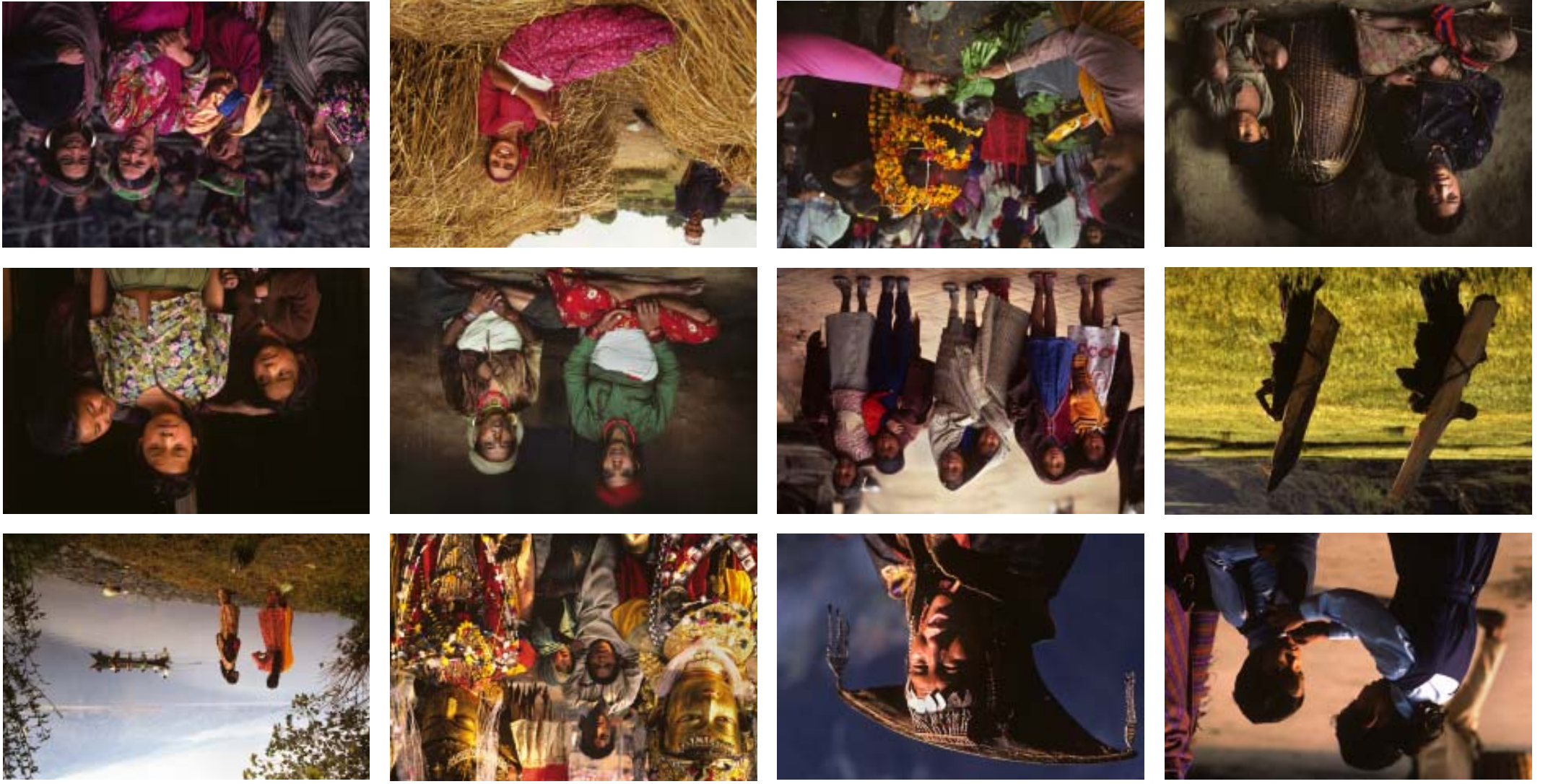


THANK YOU FOR SUPPORTING MANAKAMANA SCHOLARSHIPS



PHOTOS by KEVIN BUBRISKI





Kathmandu

SUNDAY	MONDAY	TUESDAY	WEDNESDAY	THURSDAY	FRIDAY	SATURDAY
					१७ पौष Poush १७ १७ <b>1</b>	१८ १८ <b>2</b>
					New Year's Day Swasthani Brata began Dec 31	
१९ १९ <b>3</b>	२० २० <b>4</b>	२१ २१ <b>5</b>	२२ २२ <b>6</b>	२३ २३ <b>7</b>	२४ २४ <b>8</b>	२५ २५ <b>9</b>
२६ २६ <b>10</b>	२७ २७ <b>11</b>	२८ २८ <b>12</b>	२९ २९ <b>13</b>	३० ३० <b>14</b>	१ माघ Magh ३० <b>15</b>	२ २ <b>16</b>
					Maghe Sankranti ● New moon 7:11 GMT	
३ ३ <b>17</b>	४ ४ <b>18</b>	५ ५ <b>19</b>	६ ६ <b>20</b>	७ ७ <b>21</b>	८ ८ <b>22</b>	९ ९ <b>23</b>
	Martin Luther King Day--US		Sri Panchami/Saraswati Puja			
१०/१७ १०/१७ <b>24/31</b>	११ ११ <b>25</b>	१२ १२ <b>26</b>	१३ १३ <b>27</b>	१४ १४ <b>28</b>	१५ १५ <b>29</b>	१६ १६ <b>30</b>
		India Republic Day				Swasthani Brata ends ○ Full moon 6:18 GMT

January 2010

पौष / माघ २०६६  
११/१२ २१२७



Barangsia, Humla

SUNDAY	MONDAY	TUESDAY	WEDNESDAY	THURSDAY	FRIDAY	SATURDAY
	१८ माघ Magh १८ १९	१९ १	२० २	२१ ३	२२ ४	२३ ५ ६
		Groundhog Day--US		Sri Lanka National Day		Bob Marley Day
२४ २५	२५ ७	२६ ९	२७ १०	२८ ११	२९ १२	१ फागुन Phagun ३० १३
Tulku Urgyen Rinpoche's anniversary					Maha Shivaratri Gutor	
२ १४	३ १५	४ १६	५ १७	६ १८	७ १९	८ २०
Losar-Iron Tiger-2137 Valentine's Day ● New moon 2:51 GMT	President's Day--US	Mardi Gras Shrove Tuesday	Ash Wednesday		Nepali Democracy Day	
९ २१	१० २२	११ २३	१२ २४	१३ २५	१४ २६	१५ २७
				Mawlid al-Nabi (Prophet's birthday)		Milarepa's anniversary
१६ २८						
Chotrul Duchen-- Display of Miracles Holi Purnima (Hills) ○ Full moon 16:38 GMT						

February 2010

माघ / फागुन २०६६  
१२/१ २१३७/२१३८



Patan Samyek

SUNDAY	MONDAY	TUESDAY	WEDNESDAY	THURSDAY	FRIDAY	SATURDAY
	१७ फागुन १७ Phagun <b>1</b>	१८ १८ <b>2</b>	१९ १९ <b>3</b>	२० २० <b>4</b>	२१ २० <b>5</b>	२२ २१ <b>6</b>
	Holi Purnima (Terai)					
२३ २२ <b>7</b>	२४ २३ <b>8</b>	२५ २५ <b>9</b>	२६ २५ <b>10</b>	२७ २६ <b>11</b>	२८ २७ <b>12</b>	२९ २८ <b>13</b>
	International Women's Day		Tibetan Uprising Day			
१ २९ Chaitra <b>14</b>	२ ३० <b>15</b>	३ ३१ <b>16</b>	४ ३१ <b>17</b>	५ ३१ <b>18</b>	६ ३१ <b>19</b>	७ ३१ <b>20</b>
Daylight Savings Time starts--US	Ghode Jatra ● New moon 21:01 GMT		St. Patrick's Day			Vernal equinox 17:32 GMT
८ ८ <b>21</b>	९ ९ <b>22</b>	१० ९ <b>23</b>	११ ९ <b>24</b>	१२ १० <b>25</b>	१३ १० <b>26</b>	१४ ११ <b>27</b>
	World Water Day	Chaitra Astami	Ram Nawami			
१५ १४ <b>28</b>	१६ १५ <b>29</b>	१७ १५ <b>30</b>	१८ १५ <b>31</b>			
Palm Sunday Summertime begins--Europe		○ Full moon 2:25 GMT				

March 2010

फागुन / चैत्र २०६६  
१/२ २१३७



Phewa Tal, Pokhara

SUNDAY	MONDAY	TUESDAY	WEDNESDAY	THURSDAY	FRIDAY	SATURDAY
				१९ चैत्र Chaitra १८ २	१ २० १९	२ २१ २०
				April Fool's Day	Good Friday	
२२ २१	४ २३ २२	५ २४ २३	६ २५ २४	७ २६ २५	८ २७ २६	९ २८ २७
Easter Chogyam Trungpa's anniversary		Passover ends at nightfall				
२९ २८	११ ३० २९	१२ ३१ ३०	१३ ३२ ३१	१४ १ बैशाख Baisakh ३०	१५ २ १	१६ ३ २
			Nepali New Year २०६७ Bisket Jatra Matatirtha Aunshi (Mother's Day) ● New moon १२:२९ GMT			
५ ४	१८ ६ ५	१९ ७ ६	२० ८ ७	२१ ९ ८	२२ १० ९	२३ ११ १०
				Earth Day		
१२ ११	२५ १३ १२	२६ १४ १३	२७ १५ १४	२८ १६ १५	२९ १७ १६	३० १८ १७
			Vesak (Theravada) ○ Full moon १२:१८ GMT			

April 2010

चैत्र / बैशाख २०६६ / २०६७  
२ / ३ २१३७



Jumla

SUNDAY	MONDAY	TUESDAY	WEDNESDAY	THURSDAY	FRIDAY	SATURDAY
						१८ बैशाख Baisakh १ १८ २ <b>1</b>  May Day Dezhung Rinpoche's anniversary
१९ १९	२० २०	२१ २१	२२ २२	२३ २३	२४ २४	२५ २५
<b>2</b>	<b>3</b>	<b>4</b>	<b>5</b>	<b>6</b>	<b>7</b>	<b>8</b>
२६ २६	२७ २७	२८ २८	२९ २९	३० ३०	३१ ३१	१ जेठ Jestha १
<b>9</b>	<b>10</b>	<b>11</b>	<b>12</b>	<b>13</b>	<b>14</b>	<b>15</b>
Mother's Day--US					● New moon 1:04 GMT	
३ ३	४ ४	५ ५	६ ६	७ ७	८ ८	९ ९
<b>16</b>	<b>17</b>	<b>18</b>	<b>19</b>	<b>20</b>	<b>21</b>	<b>22</b>
९/१६ २० / १८	१०/१७ २१ / १९	११ २२	१२ २३	१३ २४	१४ २५	१५ २६
<b>23/30</b>	<b>24/31</b>	<b>25</b>	<b>26</b>	<b>27</b>	<b>28</b>	<b>29</b>
	31: Memorial Day-US			Birth of the Buddha--Theravada  Saga Dawa Duchen-- Buddha's birth, enlightenment and parinirvana Buddha Jayanti ○ Full moon 23:07 GMT		

May 2010

बैशाख / जेठ २०६७  
३/८ २१३७



Patan

SUNDAY	MONDAY	TUESDAY	WEDNESDAY	THURSDAY	FRIDAY	SATURDAY
		१८ जेठ Jestha 1	१९ 20 2	२० 2१ 3	२१ 22 4	२२ 23 5
२३ 2९ 6	२४ 2९ 7	२५ 2९ 8	२६ 2९ 9	२७ 2९ 10	२८ 2९ 11	२९ 30 12
						● New moon 11:15 GMT
३० ३ 13	३१ 2 14	१ असार Asadh 15	२ 16	३ १७ 17	४ १८ 18	५ 19
	Flag Day--US World Refugee Day					
६ 20	७ 20 21	८ 22 22	९ 22 23	१० 22 24	११ 25 25	१२ 26 26
	Dilgo Khyentse Yangsi Rinpoche's birthday Summer solstice 11:28 GMT					Dzam Ling Chi Sang-- Universal Prayer Day 17 <sup>th</sup> Karmapa Ugyen Trinle Dorje's birthday Full moon 11:30 GMT
१३ 26 27	१४ 27 28	१५ 28 29	१६ 29 30			

June 2010

जेठ / असार २०६७  
९/३ २७३७



Lachang, Nuwakot

SUNDAY	MONDAY	TUESDAY	WEDNESDAY	THURSDAY	FRIDAY	SATURDAY
				१७ असार Asadh २० २३ १	१८ २४ २	१९ २२ ३
				Canada Day		
२० २३ ४	२१ २४ ५	२२ २५ ६	२३ २६ ७	२४ २७ ८	२५ २८ ९	२६ २९ १०
Independence Day--US		Dalai Lama's birthday				
२७ ३० ११	२८ ३१ १२	२९ ३२ १३	३० ३३ १४	३१ ३४ १५	३२ ३५ १६	१ श्रावण Shrawan ३ १७
● New moon 19:40 GMT				Chokhor Duchen-- 1st turning of the wheel of dharma at Sarnath		
२ ५ १८	३ ६ १९	४ ७ २०	५ ८ २१	६ ९ २२	७ १० २३	८ ११ २४
		Guru Rinpoche's birthday	Thulo Ekadashi			
९ १२ २५	१० १३ २६	११ १४ २७	१२ १५ २८	१३ १६ २९	१४ १७ ३०	१५ १८ ३१
Guru Purnima	○ Full moon 1:37 GMT					

July 2010

असार / श्रावण २०६७  
२३/७ २७३७



Kathmandu

SUNDAY	MONDAY	TUESDAY	WEDNESDAY	THURSDAY	FRIDAY	SATURDAY
१६ २७ श्रावण Shrawan ७ <b>1</b>	१७ २२ <b>2</b>	१८ २३ <b>3</b>	१९ २४ <b>4</b>	२० २५ <b>5</b>	२१ २६ <b>6</b>	२२ २७ <b>7</b>
२३ २८ <b>8</b>	२४ २९ <b>9</b>	२५ ३० <b>10</b>	२६ ३१ <b>11</b>	२७ ३२ <b>12</b>	२८ ३३ <b>13</b>	२९ ३४ <b>14</b>
३० ६ <b>15</b>	३१ ७ <b>16</b>	१ भाद्र Bhadra ८ <b>17</b>	२ ९ <b>18</b>	३ १० <b>19</b>	४ ११ <b>20</b>	५ १२ <b>21</b>
६ १३ <b>22</b>	७ १४ <b>23</b>	८ १५ <b>24</b>	९ १६ <b>25</b>	१० १७ <b>26</b>	११ १८ <b>27</b>	१२ १९ <b>28</b>
१३ २० <b>29</b>	१४ २१ <b>30</b>	१५ २२ <b>31</b>				

Ramadan begins at sunset  
● New moon 3:08 GMT

Nag Panchami

Janai Purnima  
○ Full moon 17:05 GMT

Gai Jatra

August 2010

श्रावण / भाद्र २०६७  
७/७ २७३७



Yarsa, Nuwakot

SUNDAY	MONDAY	TUESDAY	WEDNESDAY	THURSDAY	FRIDAY	SATURDAY
			१६ भाद्र Bhadra २३ ७ <b>1</b>	१७ २८ <b>2</b>	१८ २९ <b>3</b>	१९ २६ <b>4</b>
			Krishna Ashtami			
२० २७ <b>5</b>	२१ २८ <b>6</b>	२२ २९ <b>7</b>	२३ ३० <b>8</b>	२४ ३१ <b>9</b>	२५ २ <b>10</b>	२६ ३ <b>11</b>
	Labor Day-US		Rosh Hashanah begins at sunset Kushe Aunshi (Father's Day) Sakya Trizin Rinpoche's birthday ● New moon 10:30 GMT		Rosh Hashanah ends at nightfall Eid al-Fitr (Ramadan ends) Teej	
२७ ८ <b>12</b>	२८ ९ <b>13</b>	२९ ७ <b>14</b>	३० ८ <b>15</b>	३१ ९ <b>16</b>	१ आश्विन Aswin १० <b>17</b>	२ ११ <b>18</b>
Rishi Panchami					Yom Kippur begins at sunset	Yom Kippur ends at nightfall
३ १२ <b>19</b>	४ १३ <b>20</b>	५ १४ <b>21</b>	६ १५ <b>22</b>	७ १६ <b>23</b>	८ १७ <b>24</b>	९ १८ <b>25</b>
			Indra Jatra	Autumnal equinox 3:09 GMT ○ Full moon 9:17 GMT		
१० १९ <b>26</b>	११ २० <b>27</b>	१२ २१ <b>28</b>	१३ २२ <b>29</b>	१४ २३ <b>30</b>		
	Dilgo Khyentse Rinpoche's anniversary					



Kathmandu

SUNDAY	MONDAY	TUESDAY	WEDNESDAY	THURSDAY	FRIDAY	SATURDAY
					१५ आश्विन Aswin २३ ५ <b>1</b>	१६ २७ <b>2</b>
						Gandhi's birthday
१७ २४ <b>3</b>	१८ २५ <b>4</b>	१९ २६ <b>5</b>	२० २७ <b>6</b>	२१ २८ <b>7</b>	२२ २९ <b>8</b>	२३ ३० <b>9</b>
				● New moon 18:44 GMT	Ghatasthapana	
२४ ३१ <b>10</b>	२५ ३२ <b>11</b>	२६ ३३ <b>12</b>	२७ ३४ <b>13</b>	२८ ३५ <b>14</b>	२९ ३६ <b>15</b>	३० ३७ <b>16</b>
	Thanksgiving--Canada			Phulpati	Asthami	Maha Nawami
३१ ३० <b>17</b>	१ कार्तिक Kartik २७ <b>18</b>	२ २८ <b>19</b>	३ २९ <b>20</b>	४ ३० <b>21</b>	५ ३१ <b>22</b>	६ ३२ <b>23</b>
Vijaya Dashami (Tika)						○ Full moon 1:36 GMT
७/१४ २०/२९ <b>24/31</b>	८ ३१ <b>25</b>	९ ३२ <b>26</b>	१० ३३ <b>27</b>	११ ३४ <b>28</b>	१२ ३५ <b>29</b>	१३ ३६ <b>30</b>
31: Summertime ends--Europe 31: Halloween					Lha Bab Duchan--Buddha's descent from heaven	

October 2010

आश्विन / कार्तिक २०६७  
५/९ २७३७



Godavari, Lalitpur

SUNDAY	MONDAY	TUESDAY	WEDNESDAY	THURSDAY	FRIDAY	SATURDAY
	१५ कार्तिक Kartik २३ ९ <b>1</b>	१६ २७ <b>2</b>	१७ २८ <b>3</b>	१८ २९ <b>4</b>	१९ ३० <b>5</b>	२० ३१ <b>6</b>
	All Saints Day	Election Day--US			Guy Fawkes Day--UK	Gai Tihar/Laxmi Puja ● New moon 4:52 GMT
२१ ३० <b>7</b>	२२ ३ <b>8</b>	२३ ४ <b>9</b>	२४ ५ <b>10</b>	२५ ६ <b>11</b>	२६ ७ <b>12</b>	२७ ८ <b>13</b>
Daylight Savings Time ends--US Godhardan Puja/Mha Puja Newar New Year 1131				Veterans' Day--US	Chhath Parba	
२८ ९ <b>14</b>	२९ १० <b>15</b>	३० ११ <b>16</b>	१ मंसिर Mangsir २७ <b>17</b>	२ २८ <b>18</b>	३ २९ <b>19</b>	४ ३० <b>20</b>
	Eid al-Adha					
५ १३ <b>21</b>	६ १४ <b>22</b>	७ १५ <b>23</b>	८ १६ <b>24</b>	९ १७ <b>25</b>	१० १८ <b>26</b>	११ १९ <b>27</b>
○ Full moon 17:27 GMT				Thanksgiving--US		
१२ २० <b>28</b>	१३ २१ <b>29</b>	१४ २२ <b>30</b>				

November 2010

कार्तिक / मंसिर २०६७  
१९/१० २७३८



Gatlang, Rasuwa

SUNDAY	MONDAY	TUESDAY	WEDNESDAY	THURSDAY	FRIDAY	SATURDAY
			१५ मंसीर Mangsir २६ १० <b>1</b> Hanukkah begins at sunset	१६ २७ <b>2</b>	१७ २८ <b>3</b>	१८ २९ <b>4</b> Bala Chaturdashi
१९ २० <b>5</b>	२० १ ११ <b>6</b>	२१ २ <b>7</b>	२२ ३ <b>8</b>	२३ ४ <b>9</b> Hanukkah ends	२४ ५ <b>10</b> Dalai Lama Nobel Prize 1989	२५ ६ <b>11</b>
● New moon 17:36 GMT		Muharram Islamic New Year 1432				
२६ ७ <b>12</b>	२७ ८ <b>13</b> Namkhai Norbu Rinpoche's Birthday	२८ ९ <b>14</b>	२९ १० <b>15</b>	१ पौष Poush <b>16</b>	२ ११ <b>17</b>	३ १२ <b>18</b>
४ १३ <b>19</b>	५ १४ <b>20</b>	६ १५ <b>21</b>	७ १६ <b>22</b>	८ १७ <b>23</b>	९ १८ <b>24</b> Dudjom Rinpoche's anniversary	१० १९ <b>25</b> Christmas
		Winter solstice 23:38 GMT ○ Full moon 8:13 GMT				
११ २० <b>26</b> Boxing Day--UK	१२ २१ <b>27</b>	१३ २२ <b>28</b>	१४ २३ <b>29</b>	१५ २४ <b>30</b>	१६ २५ <b>31</b> New Year's Eve	

December 2010

मंसीर / पौष २०६७  
 १०/११ २१३७



Sharmila and Sashma Syangtan are both ANM students, a year apart at Makwanpur Technical Institute. They are not sisters, but share the same family name which designates their ethnic group. Their community was celebrating Tamang Losar (Tamang is a hill ethnic group, many of whom have immigrated to the Terai over the last few generations, and Losar is New Year), so we were given *khatas* (ceremonial scarves) and fed special foods. With the invaluable help of Gokarna Subedi, who

is the local person who identifies promising scholarship candidates and facilitates everything from getting funds to the girls to helping them find jobs, the Manakamana Fund has been able to assist a number of young women from Sarlahi district.



Gita Mangranti is an ANM student at Makwanpur Technical Institute, where most of the scholarship recipients from this area have done their degrees. It's a modest building on the outskirts of Hetauda, a large town on the main road from India. The campus chief and one teacher showed us around the facilities, which included a well-stocked lab and a library where students can borrow textbooks rather than buying them. The institute is 13 years old and had 65 qualified applicants for

40 places in the ANM class this year. The pass rate for the comprehensive nationwide ANM exam is 90%, and they told us that almost all of their graduates find jobs. There were no students at the campus because they were all away doing their on-the-job training or studying for upcoming final exams.

We visited Gita at her room in Hetauda, where she was preparing to take exams in 12 days. Then she will do her OJT at Birgunj Hospital, which is the busiest hospital in the region. Her tiny room was immaculately organized: a bed, a table with books and a battery-powered lamp (the power was out 14 hours/day in Nepal), a kitchen area with a small stove and a few dishes and pots and pans, and a set of shelves--one used as a Hindu shrine, one for books, one for clothes, and one for food supplies. She's confident she will pass her exams and looks forward to working in the hospital for 3 months.

**NEWS FLASH:** Gita was the "topper" (highest marks) of her class at Makwanpur Technical Institute on the national ANM exam!



Sita Damai, one of this year's batch of ANM students, was staying and working for 15 days at Bhimphedi Hospital as part of her ANM training. It's the second oldest hospital in Nepal, in a 101-year old building, and Sita and her fellow students live crammed into a few small rooms and cook their food outdoors. But they are getting good experience, assisting in childbirth deliveries and

vaccinations, and learning how a hospital works. In Sarlahi, we visited Sita's home, where her mother lives alone now that Sita, her youngest child, is away at school. She cried because she misses her daughter, but cheered up a bit at the idea that one day soon Sita would be able to be at home and have a good job to help support her mother.



Chameli Singar is from a remote village in Lalitpur district. Her family owns a tiny plot of land which provides enough food for only 3 months per year. Her father works carrying loads. Chameli managed to attend school, and got a first division result on the SLC exam, but there was no money for her to

continue her education, so she came to Kathmandu and found a job as a dishwasher in a cafeteria. By chance she met Geeta, who encouraged her to apply for a scholarship. Now she is studying for her ANM degree at Lalitpur Polytechnical Institute, and doing community fieldwork as part of her course.

## A big thank you to Kevin Bubriski for his generous donation of 12 photos.

KEVIN BUBRISKI served in the American Peace Corps from 1975-78 and was a resident of Nepal 1984 - 1990. He has exhibited worldwide, and his work is in the permanent collections of the Museum of Modern Art, the Metropolitan Museum of Art, and the Bibliothèque Nationale, Paris. A recipient of Guggenheim, Fulbright and NEA fellowships, Bubriski has worked on assignments throughout the Hindu, Buddhist and Muslim world. His books include *Portrait of Nepal*, which won the Golden Light Documentary Award in 1993 and *Power Places of Kathmandu: Hindu and Buddhist Holy Sites in the Sacred Valley of Nepal* (1995) and *Pilgrimage: Looking at Ground Zero* (2002). In 2008 a solo exhibition of his photographs "Nepal in Black and White" was at the Rubin Museum of Art in New York City.

Nepali dates and holidays: Manohari Upadhyaya  
Tibetan dates and holidays: Rigpa calendar and Pam Ross  
Distribution: Bidur Dangol, Vajra Publications, Kathmandu  
Printed at: Format Printing Press, Kathmandu

### A NOTE ON DATES AND TIME:

GMT (Greenwich Mean Time) is the universal time standard worldwide, also known as UT. Nepal time (NPT) is GMT +5:45. Nepal does not use summertime.

Dates of holidays are accurate to the best of our ability, but it's always wise to check locally before making plans, as dates can change, and some, like Islamic holidays, depend on the sighting of the moon.

### KEY TO NEPALI AND TIBETAN NUMBERS:

१	२	३	४	५	६	७	८	९	०
१	२	३	४	५	६	७	८	९	०
༡	༢	༣	༤	༥	༦	༧	༨	༩	༠

## MANAKAMANA WOMEN'S SCHOLARSHIP FUND

Since 1990, the Manakamana Women's Scholarship Fund has been helping young Nepali village women to realize their dreams of higher education in the fields of health and education.

It is still extremely rare for a girl to finish class 10 in rural Nepal, and still rarer for her to pass the comprehensive government exam (the SLC, or School Leaving Certificate). Further education is beyond the reach of most of these young women: they face familial and societal pressure to marry and start having children, not to mention the expense of college. Most families, if they have any resources beyond subsistence, think only of educating sons, since daughters marry out of the family and are therefore not a good "investment".

The philosophy of the Manakamana Scholarships is to provide assistance for specific short degrees, at Nepali campuses outside of the Kathmandu Valley, to train young women in skills that will be useful in their villages. The degrees include:

- ▶ 10+2 in Education, a 2-year degree which qualifies a girl to teach primary school
- ▶ ANM (Auxiliary Nurse-Midwife), an 18-month degree which qualifies her to work in a health post
- ▶ CMA (Certified Medical Assistant), a 15-month course which qualifies her to work in a health post

The Manakamana Fund was started in 1990 by several U.S. Peace Corps volunteers who wanted to help a few of the girls they had taught in high school to go on to college. They named the fund after Manakamana, a popular wish-fulfilling goddess. Over the years, it has grown from the original 3 scholarships to nearly 50 per year. Geeta Manandhar, Pam Ross and Manohari Upadhyaya are the directors of the fund. Because our overhead is extremely low, almost all of the money donated to MWCF goes directly to the scholarship recipients. Our budget for the 2008-09 fiscal year was \$20,000, all raised through private donations.

THANK YOU FOR SUPPORTING GIRLS' EDUCATION IN NEPAL.

Contact: PO Box 3059, Kathmandu, Nepal  
PO Box 5, Point Reyes Station, CA 94956 USA  
manakamanafund@yahoo.com

Check out our website: [www.manakamanafund.org](http://www.manakamanafund.org)